

# Compact Anesthetic Machine Owner's Manual



# OWNER'S MANUAL AND ASSEMBLY INSTRUCTIONS

## Assembly Instructions for Machine

Tools Required: 5/32" Allen wrench, 7/16" wrench

### Post & Base Assembly (optional accessory) – Skip to page 3 if machine is a tabletop

Base Assembly:

- Turn base over to expose the underside.
- Insert (press fit) the five casters into the five holes at the end of each leg of the base.
- Turn the base over so the casters are on the floor.
- Firmly insert the post into the center of the base.



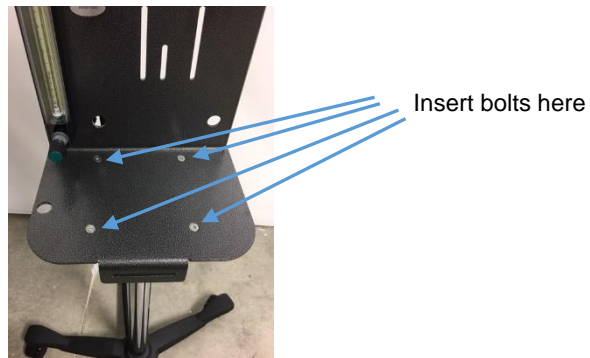
Attaching machine chassis to post:

- Remove packet of bolts, nuts, flat washers and star washers.



- Lift machine chassis and place it gently on top of the post. Do not let go until bolts are installed.

- Align the holes in the chassis with the holes on the top of the post.
- Insert the four bolts through the machine chassis from the top down through the post. Be certain the bolts go through both the machine chassis and the top of the post.



- Install a flat washer, star washer and nut (in that order) on the underneath side of the chassis. Do not tighten until all bolts are installed.



- Use a 5/32" Allen wrench and 7/16" wrench to securely tighten all bolts.



## Installing the vaporizer

Tools Required: 5mm Allen wrench for a Tec 3 vaporizer

Note: Tec 3 vaporizer bolts are included - other style vaporizers may require different bolts.

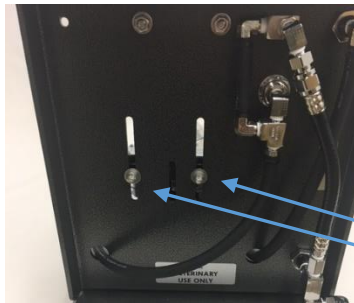


Vaporizer spacers,  
washers & bolts

- Disconnect the vaporizer inlet and outlet adapters from each other.
- Set the vaporizer to be mounted on top of the machine chassis.



- Attach vaporizer to the chassis by inserting the long vaporizer bolts, with washers, through the slot (from the back side). Place the spacers on the bolts on the front side of the chassis and insert the bolts into the back of the vaporizer and tighten.

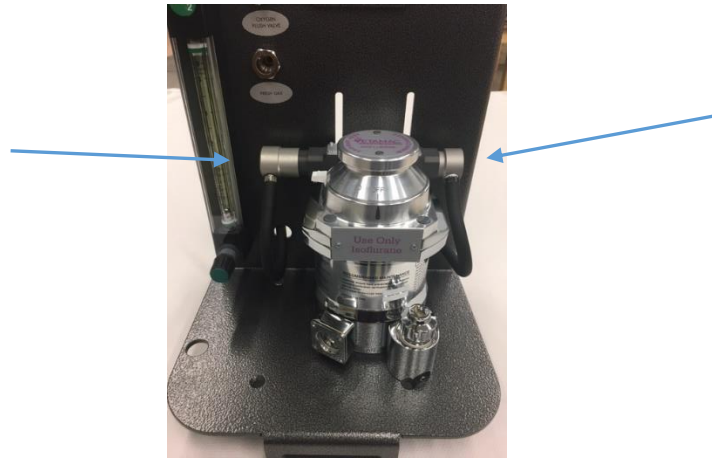


Bolts & washers on back side



Spacers on front side

- Connect inlet and outlet adapters to the vaporizer.



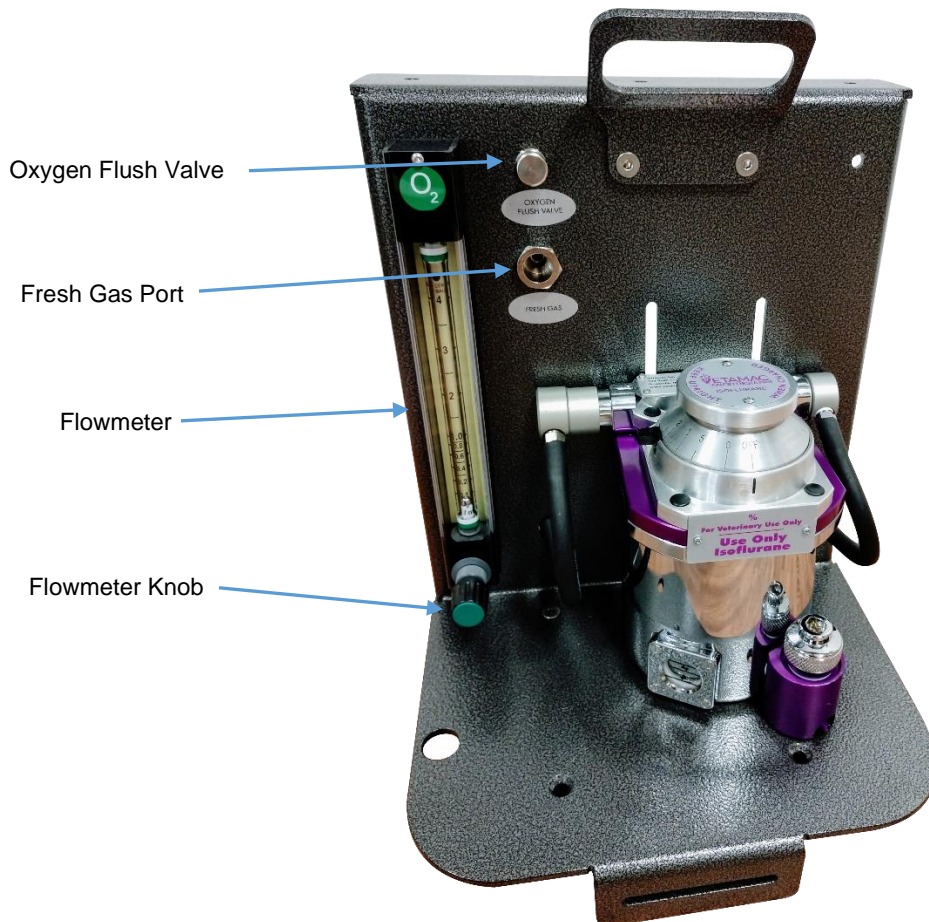
- Fill the vaporizer by removing the fill cap and fill to line in window with the correct anesthetic agent. Allow at least an hour for the wick to saturate.
- Agent is only delivered when there is oxygen flow and the vaporizer is on.
- Turn the vaporizer on by depressing the button on the left side of the dial and turn the dial to the desired concentration.
- Concentration is constant regardless of oxygen flow.

## Oxygen Source Connections

- Connect the machine to an oxygen source at 20-50psi using the DISS fitting on the left side of the machine.
- Check for oxygen flow by slowly opening the flowmeter knob and observing the ball rising in the tube on the flowmeter. Depress the oxygen flush valve to assure that there is a “flush” of oxygen into the system by listening for oxygen flow. The oxygen flush valve is restricted for patient safety.

## Connection to Anesthetic Circuit

- Connect the device to be used to the fresh gas port using a 15mm fresh gas adapter and ¼” ID Norprene or Silastic tubing.



## Installing an E-Tank Yoke (Optional on Post & Base Model)

- The E-Tank bracket is adaptable to fit most sizes of anesthetic machine posts. Two sizes of u-bolts are included with the bracket. The correct size needs to be used to ensure the u-bolts grip the post appropriately.
- Remove nuts, washers and **large** u-bolts from the bracket. The large u-bolts are for the Dream 2" post.



- Align u-bolt around back of post through the yoke bracket.



- Place flat washer, star washer, and nut on u-bolt. Align yoke parallel with machine. Adjust height of bracket on post to allow clearance at the floor and at the top of the tanks. Tighten using 7/16" wrench. Do the same for second u-bolt on bottom of bracket.



- Attach one end of oxygen hose to the back of machine. Attach other end of hose to regulator on yoke.



- Rotate post in base to allow tanks to hang between legs of base.





## **Warranty**

Vetamac warrants to the original purchaser that the Vetamac Equipment, not including accessories or consumable products, shall be free from defects in materials and workmanship under normal use, if maintained by Vetamac and in accordance to Vetamac guidelines, and used in accordance with its labeling, for a period of seven (7) years. This warranty is void if the Equipment has been altered, misused, damaged by neglect or accident, tampered with, not properly maintained, or repaired by persons not authorized by Vetamac. This warranty does not cover normal wear and tear and maintenance items and specifically excludes accessory items and any other equipment used with the Equipment.

## **Periodic Service**

Vetamac recommends that the anesthetic machine be serviced annually by Vetamac or an authorized service technician. This service should include a verification and test of the following components on the machine: the high and low pressure circuits, the flowmeter and oxygen flush valve, the rebreathing circuit and accessories, the non-rebreathing circuit and accessories, the gas scavenging circuit, and the overall condition of the machine. The service should also include a pressure test of all components including the vaporizer and a verification of the vaporizer calibration.

**This machine is designed to give many years of reliable service,  
with the ultimate goal of the best possible patient care.**

**Any questions should be addressed to:**

**Vetamac, Inc.  
PO Box 178  
Rossville, IN 46065  
(800)334-1583  
[www.vetamac.com](http://www.vetamac.com)  
[info@vetamac.com](mailto:info@vetamac.com)**